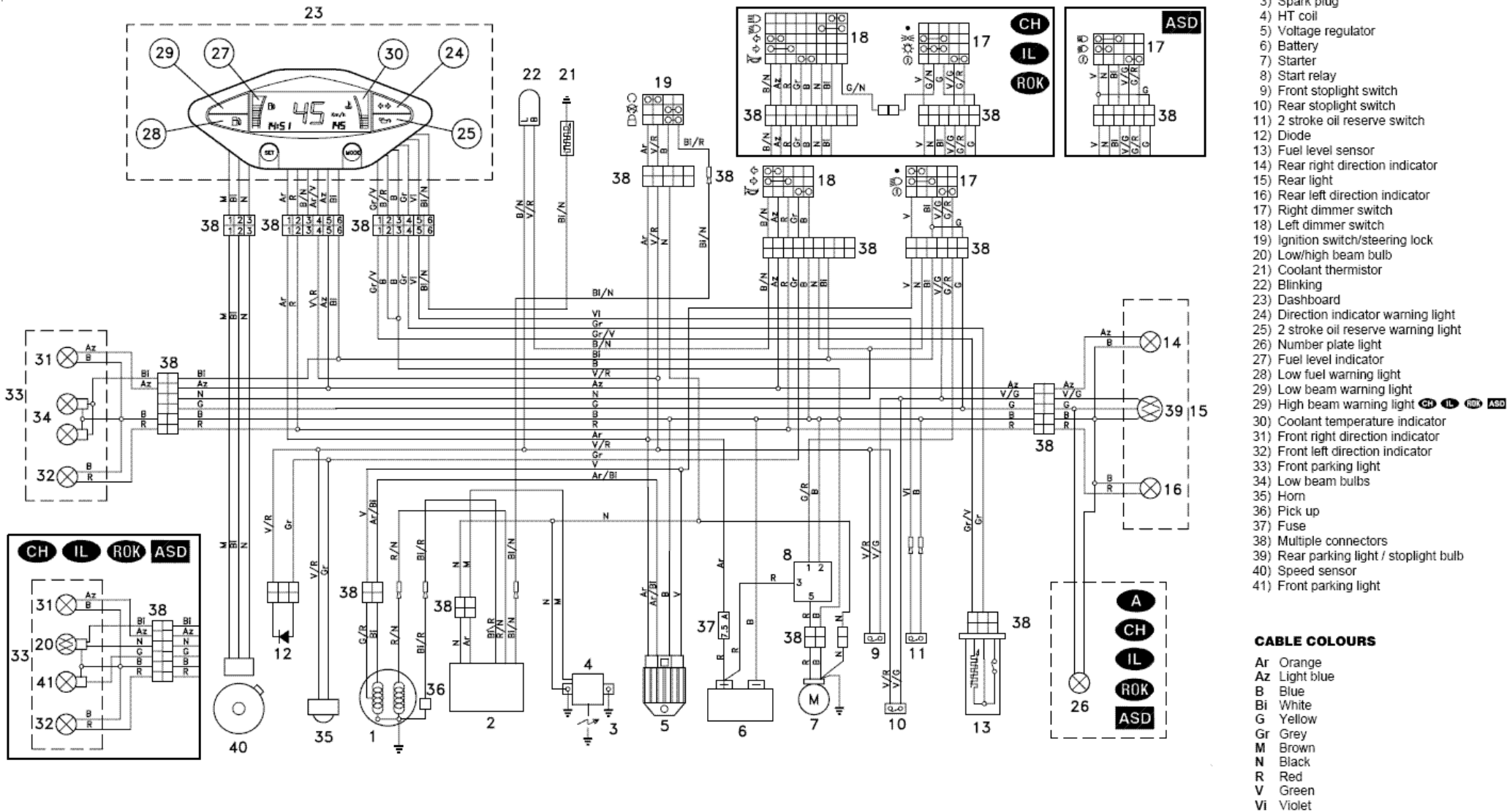


WIRING DIAGRAM Area 51

www.Clasticycles.org



- 1) Generator
- 2) CDI
- 3) Spark plug
- 4) HT coil
- 5) Voltage regulator
- 6) Battery
- 7) Starter
- 8) Start relay
- 9) Front stoplight switch
- 10) Rear stoplight switch
- 11) 2 stroke oil reserve switch
- 12) Diode
- 13) Fuel level sensor
- 14) Rear right direction indicator
- 15) Rear light
- 16) Rear left direction indicator
- 17) Right dimmer switch
- 18) Left dimmer switch
- 19) Ignition switch/steering lock
- 20) Low/high beam bulb
- 21) Coolant thermistor
- 22) Blinking
- 23) Dashboard
- 24) Direction indicator warning light
- 25) 2 stroke oil reserve warning light
- 26) Number plate light
- 27) Fuel level indicator
- 28) Low fuel warning light
- 29) Low beam warning light
- 30) High beam warning light
- 31) Coolant temperature indicator
- 32) Front right direction indicator
- 33) Front left direction indicator
- 34) Front parking light
- 35) Low beam bulbs
- 36) Horn
- 37) Pick up
- 38) Fuse
- 39) Multiple connectors
- 40) Rear parking light / stoplight bulb
- 41) Speed sensor
- 42) Front parking light

CABLE COLOURS

- Ar Orange
- Az Light blue
- B Blue
- Bi White
- G Yellow
- Gr Grey
- M Brown
- N Black
- R Red
- V Green
- Vi Violet